

ST+I - more than 25 years thinking health

# Transportation

More than ideas ... we create solutions ...



ST+I - more than 25 years thinking health

# Transportation

## Our mission is

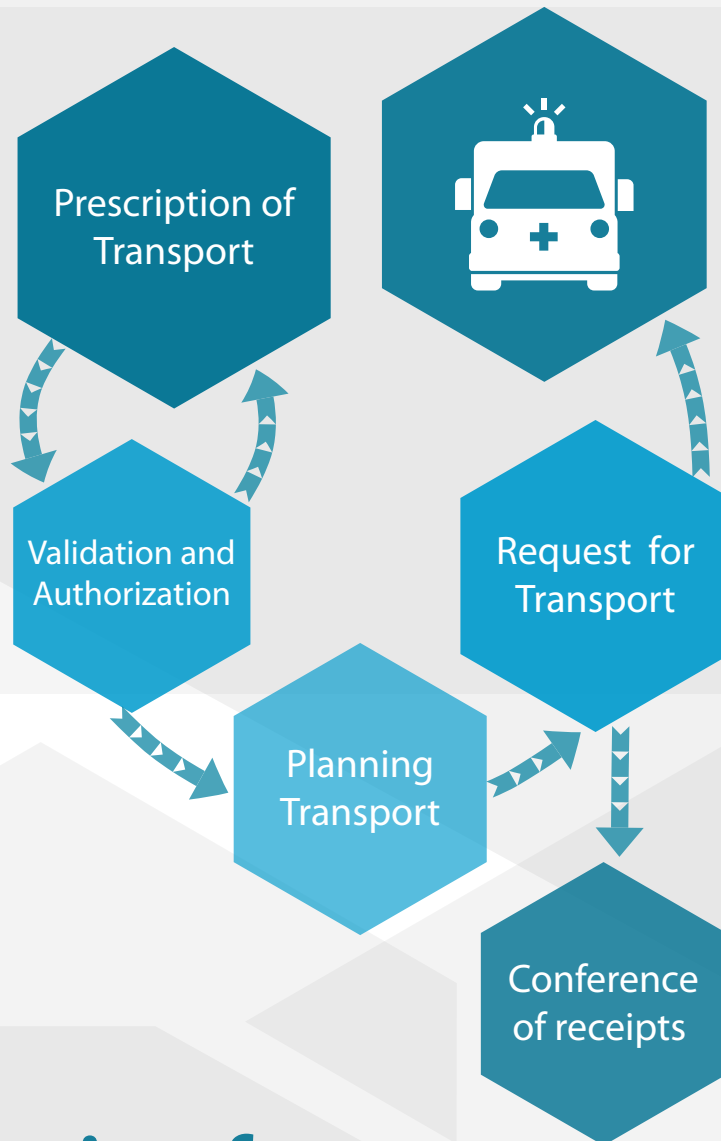
Being an international reference high value on health, ensuring the sustainability of the system, promoting and valuing partnerships with our partners and investing in the ongoing training and development of staff, resulting in better service for our customers.

Finally, our solution will help achieve the noblest principle of all hospital institution, helping to provide a service increasingly higher quality to users of institutions that use our solutions.

ST+I - more than 25 years thinking health

# ST+I

More than 25 years thinking health



## The solution for Transportation of Patients...

One solution, a single platform, which responds to the whole paradigm of Transportation of Patients.

Developed in partnership with the most respected Health Care institutions.

# Prescription Transportation

Robust model that allows to simplify the transport request

- Transportation Request
  - Urgent
  - Not Urgent
  - Critical
- Transportation without scheduling
- Multiple Transports
- Most frequent origins and destinations
- Clinical justification
- Type of Transportation
  - Ambulances
  - Medical Ambulances
  - Individual Ambulance
  - ...

Supporte Técnico: Laboral - Assistência: 9h:00h às 12:30h e das 14:00h às 18:30h, ligar 25934300 • Pós-laboral - Prevenção: 12:30h às 14:00h e após as 18:30h, feriados e

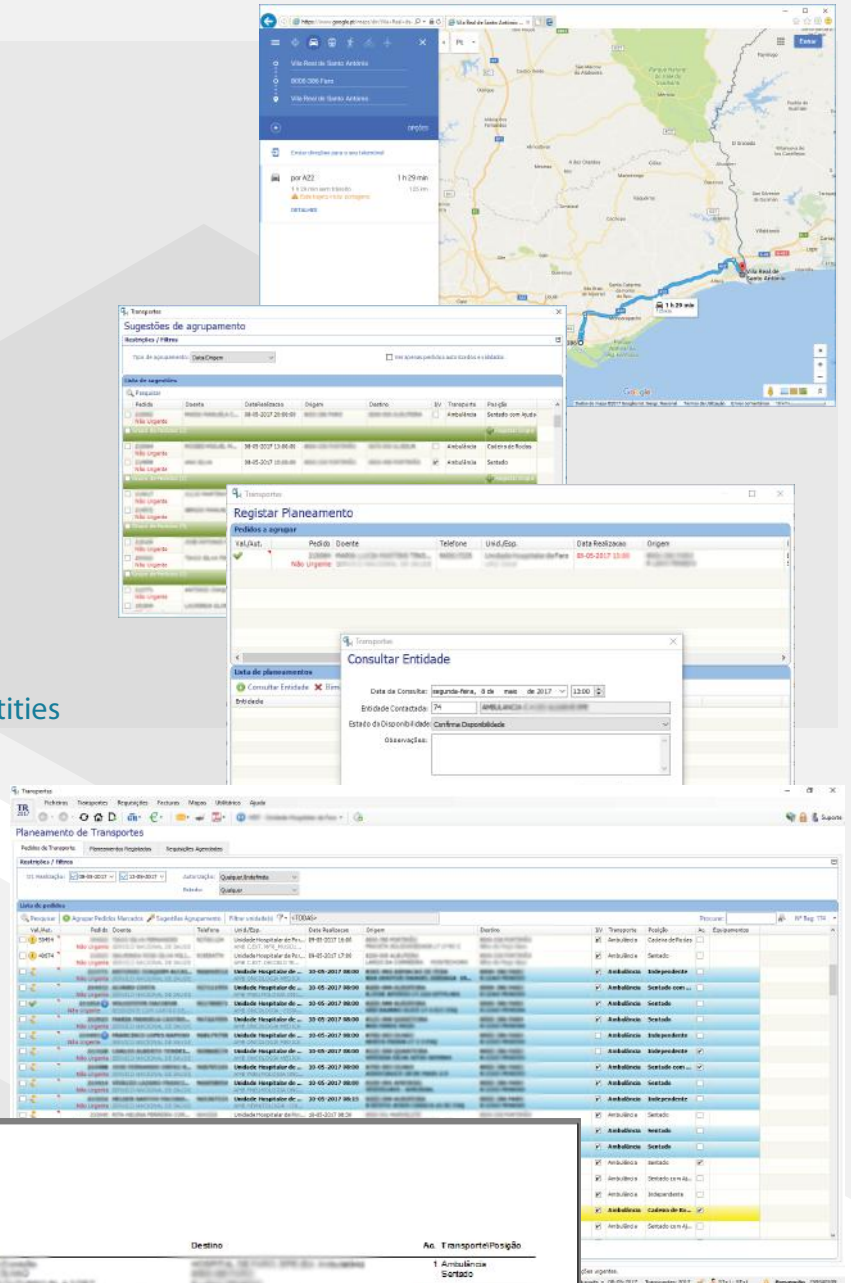
- Necessary equipment
- Follow-up
- Transportation History
- Configurable Form
- Request by Administrative
  - Validation by the doctor
  - Complete order with clinical information
- Order validation
- Social service

Supporte Técnico: Laboral - Assistência: 9h:00h às 12:30h e das 14:00h às 18:30h, ligar 25934300 • Pós-laboral - Prevenção: 12:30h às 14:00h e após as 18:30h, feriados e

# Transportation Planning

Designed to facilitate and optimize hospital transport management

- Viewing of Transport Requests
- Update on "Real Time" of new orders
- Updating the status of each request
- View order details
- Authorization of Requests
- Change of original request
- Course preview
- Patient grouping suggestion
  - Optimize routes
  - Decrease transport routes
  - Decrease costs
- Register for availability of multiple entities
  - Suppliers evaluation



### Transportes agendados

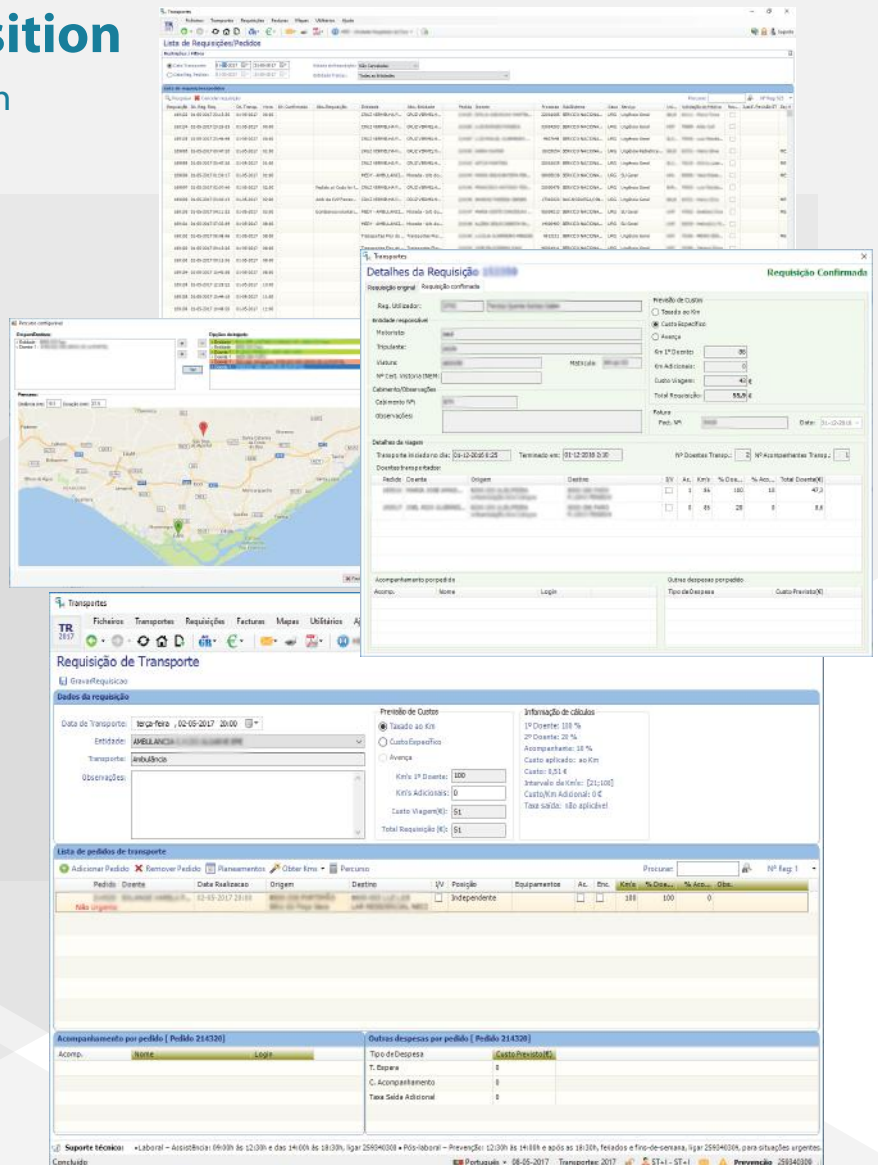
Unidade Hospitalar: Unidade Hospitalar  
 Entidade: Transp+por+...  
 Data Serviço: 08-05-2017

Req.	Hora	Pedido	Doente/Processo	Origem	Destino	Mo. Transporte/Posição
188476	15:00	200440	...	...	...	1 Ambulância Sotacao
188478	10:00	203271	...	...	...	0 Ambulância Sotacao
188479	18:00	205509	...	...	...	0 Ambulância Cadeira de Rodas
188479	16:00	207223	...	...	...	0 Ambulância Sotacao
188479	15:00	208187	...	...	...	1 Ambulância Cadeira de Rodas
188479	15:00	213388	...	...	...	1 Ambulância Sotacao com Ajuda

# Transportation Requisition

Prediction and control of requisition to the supplier

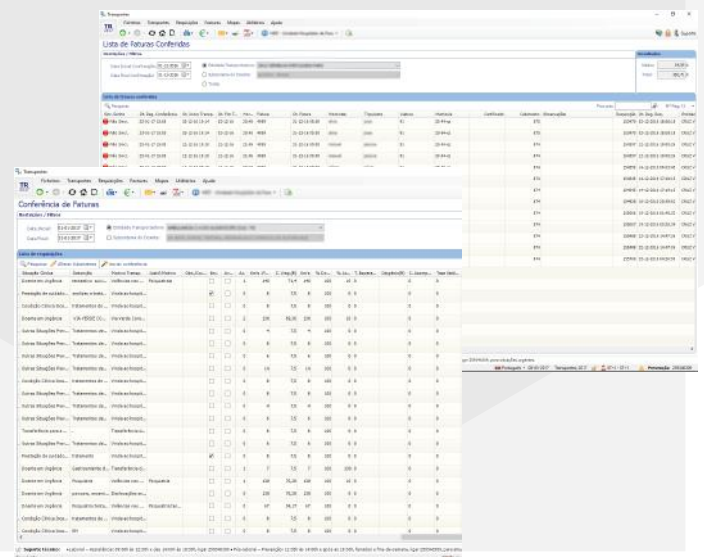
- Request for transport to the supplier
- Transportation Scheduling
- Definition of costs per supplier
- Cost Forecasting
- Billing Options
  - Taxed at Km
  - Specific cost
  - Agreement fee
  - Additional Km
- Cost distribution
  - 1st patient
  - Other patients
  - Accompanying persons
- Additional expenses
  - Equipments
  - Standby times
- Organization of course
- Kms calculation automatically
- Track view
- Automatic sending
  - Fax
  - Email



# Billing

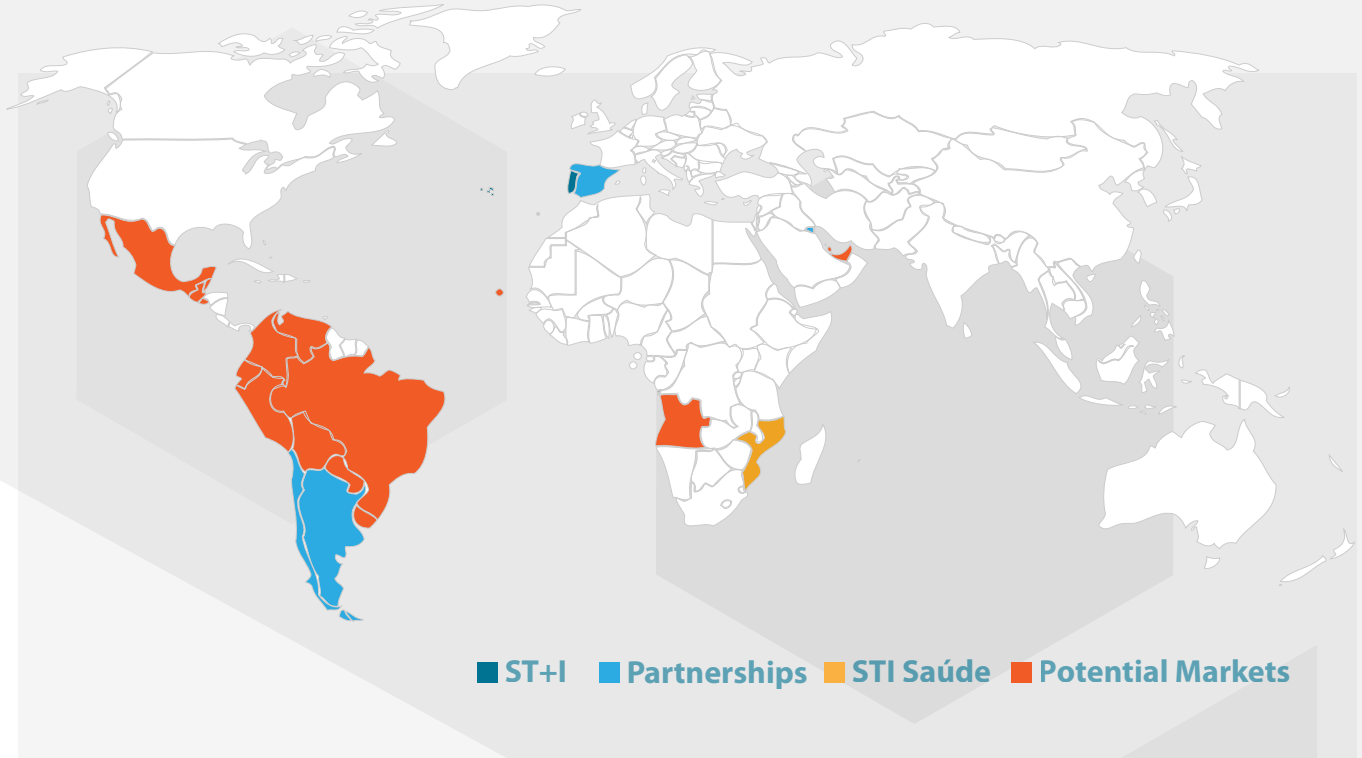
Tool that allows efficient control of all transportation billings

- Confirmation of actual transport
  - Filling of transport details
  - Driver control
  - Vehicle control
- Conference by defined period
- Conference by supplier
- Conference by financial entity
- Cost control per patient
- Validation of calculated totals

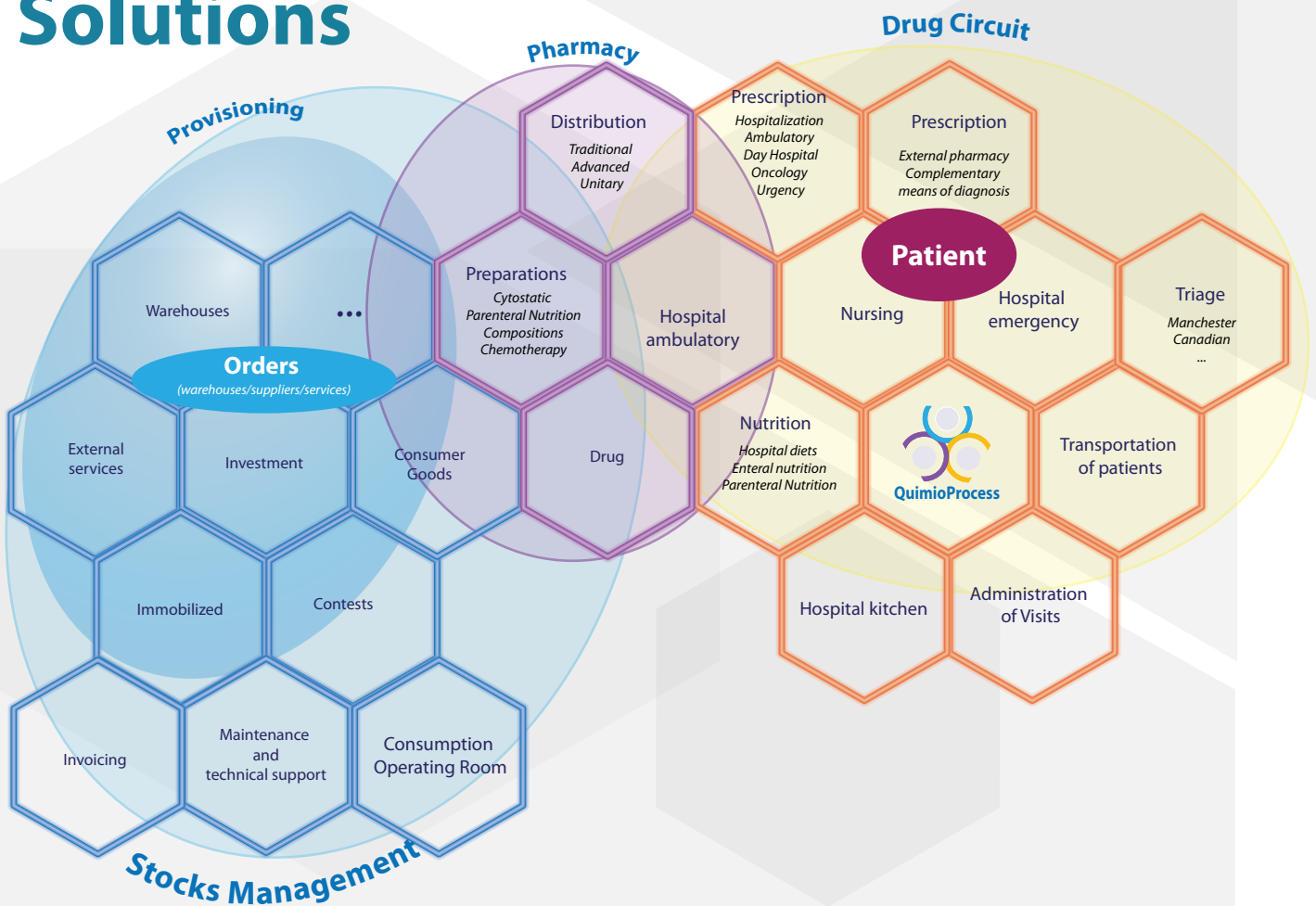




# Markets



# Solutions



ST+I - more than 25 years thinking health

## Portugal:

ST+I- Serviços Técnicos de Informática

Headquarters: Av. João Paulo II  
Bloco 18 r/c Esq.  
5000-198 Vila Real

Branch: Centro de Negócios Ideia Atlântico  
Av General Carrilho da Silva,  
Variante do Fojo  
Tenões, Braga, 4719-005 Braga



Management:  
Paulo Costa  
pcosta@sti.pt  
Tel. +351 964643067

Filipa Costa  
fcosta@sti.pt  
Tel. +351 926816587

Business management:  
Rui Costa  
rcosta@sti.pt  
Tel. +351 961600660

General:  
sti@sti.pt  
Tel. +351 259340300  
Fax. +351 259340307

<http://www.sti.pt>  
<http://www.facebook.com/stmaisi>

More than ideas ... we create solutions ...



IMPDR45\_00 NA45\_28112017

**NORTE2020**  
PROGRAMA OPERACIONAL REGIONAL DO NORTE

**PORTUGAL**  
**2020**

 **UNIÃO EUROPEIA**  
Fundo Europeu  
de Desenvolvimento Regional